

ISLAND SPAS





WELLNESS FOR EVERY BODY

No matter your size, your shape, or your need for hydrotherapy, we have a product that was designed and built with passion for you.

PROUDLY MADE IN LAS VEGAS, NV

As an American spa manufacturer based in Las Vegas, Nevada, USA, we bring 30 years of industry experience to every product we create. Being based in America ensures exceptional craftsmanship, stringent quality control, and superior customer service.

INNOVATIVE TECHNOLOGY

Our hot tubs boast exceptional energy efficiency, saving you money while being eco-friendly. Enjoy powerful, customizable jets for targeted massage, and top-tier insulation to maintain optimal temperature, ensuring a luxurious and cost-effective spa experience right at home.

QUALITY CONSTRUCTION

Backed by an extensive warranty and made from sturdy materials, our hot tubs guarantee superior durability. Experience peace of mind with our products, designed for lasting enjoyment.

COMMITTED TEAM

We're dedicated to delivering more than just a hot tub—we're bringing wellness to your home. With us, you're not just investing in a hot tub—you're gaining a reliable network to make your spa experience effortless and enjoyable.





TRIPLE A STANDARD

AESTHETIC CUSTOMIZATION

We offer the largest selection of hot tubs with distinct customization options, including lighting, water features, and color choices. Tailor your spa to perfectly fit any space and meet your unique needs, achieving Wellness for Every Body.

ABSOLUTE HYDROTHERAPY

Every body is different, which is why we provide a wide variety of hydromassage jet options including our cutting-edge H2O Powerflow, Helix, Hydro Extreme, neck and shoulder jets, and unmatched powerful Dual Footblasters.

ADVANCED SPA MAINTENANCE

Artesian offers user-friendly ease of maintenance with our advanced clean water management systems. Choose from the Waterlab, Diamond AOP™, FROG® @ease® In-Line System, and Ozonator, ensuring a hassle-free spa experience.



SETTING A NEW STANDARD

ISLAND SPAS

Experience a bold, modern design, offering unmatched customization and powerful hydrotherapy tailored to your every need.



MODELS



BIMINI

9 SEATS	
91 in. x 132 in. x 36 in.	
231 cm x 335 cm x 91 cm	
JETS	PUMPS
ALL TRIMS	(1) .6 BHP (.3 HP) Circ Pump
ELITE 72	(1) 6.0 BHP (3.0 HP cont.) 1-spd (3) 3.0 BHP (1.5 HP cont.) 1-spd
LUXURY 60	(2) 6.0 BHP (3.0 HP cont.) 1-spd (1) 3.0 BHP (1.5 HP cont.) 1-spd



ISLA MARGARITA

9 SEATS	
91 in. x 108 in. x 36 in.	
231 cm x 274 cm x 91 cm	
JETS	PUMPS
ALL TRIMS	(1) .6 BHP (.3 HP) Circ Pump
ELITE 68	(1) 6.0 BHP (3.0 HP cont.) 1-spd (3) 3.0 BHP (1.5 HP cont.) 1-spd
LUXURY 56	(2) 6.0 BHP (3.0 HP cont.) 1-spd (1) 3.0 BHP (1.5 HP cont.) 1-spd



GRAND BAHAMA

6 SEATS	
91 in. x 91 in. x 36 in.	
231 cm x 231 cm x 91 cm	
JETS	PUMPS
ALL TRIMS	(1) .6 BHP (.3 HP) Circ Pump
ELITE 64	(1) 6.0 BHP (3.0 HP cont.) 1-spd (3) 3.0 BHP (1.5 HP cont.) 1-spd
LUXURY 52	(2) 6.0 BHP (3.0 HP cont.) 1-spd (1) 3.0 BHP (1.5 HP cont.) 1-spd
ESSENTIAL 44	(2) 5.0 BHP (2.5 HP cont.) 1-spd



GRAND CAYMAN

7 SEATS	
91 in. x 91 in. x 36 in.	
231 cm x 231 cm x 91 cm	
JETS	PUMPS
ALL TRIMS	(1) .6 BHP (.3 HP) Circ Pump
ELITE 64	(1) 6.0 BHP (3.0 HP cont.) 1-spd (3) 3.0 BHP (1.5 HP cont.) 1-spd
LUXURY 52	(2) 6.0 BHP (3.0 HP cont.) 1-spd (1) 3.0 BHP (1.5 HP cont.) 1-spd
ESSENTIAL 44	(2) 5.0 BHP (2.5 HP cont.) 1-spd



ANTIGUA

6 SEATS	
84 in. x 84 in. x 36 in.	
213 cm x 213 cm x 91 cm	
JETS	PUMPS
ALL TRIMS	(1) .6 BHP (.3 HP) Circ Pump
ELITE 54	(1) 6.0 BHP (3.0 HP cont.) 1-spd (2) 3.0 BHP (1.5 HP cont.) 1-spd
LUXURY 44	(2) 5.0 BHP (2.5 HP cont.) 1-spd (1) 3.0 BHP (1.5 HP cont.) 1-spd
ESSENTIAL 32	(2) 3.0 BHP (1.5 HP cont.) 1-spd



CAPTIVA

7 SEATS	
84 in. x 84 in. x 36 in.	
213 cm x 213 cm x 91 cm	
JETS	PUMPS
ALL TRIMS	(1) .6 BHP (.3 HP) Circ Pump
ELITE 54	(1) 6.0 BHP (3.0 HP cont.) 1-spd (2) 3.0 BHP (1.5 HP cont.) 1-spd
LUXURY 44	(2) 5.0 BHP (2.5 HP cont.) 1-spd (1) 3.0 BHP (1.5 HP cont.) 1-spd
ESSENTIAL 32	(2) 3.0 BHP (1.5 HP cont.) 1-spd



NEVIS

6 SEATS	
84 in. x 78 in. x 34 in.	
213 cm x 198 cm x 86 cm	
JETS	PUMPS
ALL TRIMS	(1) .6 BHP (.3 HP) Circ Pump
LUXURY 44	(2) 5.0 BHP (2.5 HP cont.) 1-spd (1) 3.0 BHP (1.5 HP cont.) 1-spd
ESSENTIAL 33	(2) 3.0 BHP (1.5 HP cont.) 1-spd



SANTA CRUZ

3 SEATS	
84 in. x 61 in. x 34 in.	
213 cm x 155 cm x 86 cm	
JETS	PUMPS
ESSENTIAL 32	(2) 3.0 BHP (1.5 HP cont.) 1-spd (1) .6 BHP (.3 HP) Circ Pump

• BHP (Brake Horsepower) is a maximum value measured by the motor manufacturer with no load applied. • HP: Horsepower • Dry weight is shipping weight, including package and wooden runners. • Dimensions, capacities and weights are approximate. Specifications are subject to change without notice. • Spa images have been digitally rendered and may or may not show optional features.



DESIGNED FOR ANY LIFESTYLE

Introducing our new product trim levels: Essential, Luxury, and Elite. Start by selecting the perfect size hot tub for your space, pick your ideal seat configuration and then choose the trim that best suits your lifestyle, offering the ideal balance of features—from thoughtful essentials to ultimate indulgence.

ELITE

- ✓ 54, 64, 68 or 72 Helix Jets
- ✓ Neck Collar Jets
- ✓ 2 Jet Pumps + Circ Pump
- ✓ Premium Cabinets
- ✓ Hybrid Frame
- ✓ Cascade Falls
- ✓ Flx.Go Topside Control
- ✓ Full Foam with ABS Bottom
- ✓ Corner Kickrail Glow Light
- ✓ Elite Interior & Exterior Lighting
- ✓ Ozonator
- ✓ Enhanced 3rd Pump + Footblasters
- ✓ 4th Jet Pump (Bahama & Cayman)
- ✓ DirectFlow Personal Control®
- ✓ Extended Warranty

LUXURY

- ✓ 44, 52, 56 or 60 Helix Jets
- ✓ Neck Collar Jets
- ✓ 2 Jet Pumps + Circ Pump
- ✓ Premium Cabinets
- ✓ Hybrid Frame
- ✓ Cascade Falls
- ✓ Flx.Go Topside Control
- ✓ Full Foam with ABS Bottom
- ✓ Corner Kickrail Glow Light
- ✓ Premium Interior Lighting
- ✓ Ozonator
- ✓ Enhanced 3rd Pump + Footblasters

ESSENTIAL

- ✓ 32, 33 or 44 Helix Jets
- ✓ Neck Collar Jets
- ✓ 2 Jet Pumps + Circ Pump
- ✓ Premium Cabinets
- ✓ Hybrid Frame
- ✓ Cascade Falls
- ✓ Flx.Go Topside Control
- ✓ Full Foam with ABS Bottom
- ✓ Corner Kickrail Glow Light
- ✓ Premium Interior Lighting





POPULAR OPTIONS



SPA CONTROL, ANYWHERE YOU GO

Take full control of your spa with our app-based system, powered by Wi-Fi for seamless connectivity. Whether you're preparing your spa on the way home or checking in from your vacation house, enjoy the convenience of managing your spa anytime, anywhere in the world.



ADVANCED CLEAN WATER SYSTEMS

Keep your hot tub water crystal clear with options like Frog® @ ease®, Diamond AOP™, Waterlab, and an Ozonator.



IMMERSIVE HOT TUB AUDIO

With the optional Bluetooth Audio integrated into your hot tub, it becomes more than a retreat—it's a complete sensory experience. Transducers are seamlessly built into the tub, turning the entire hot tub into a speaker, ensuring an immersive audio experience without compromising its sleek design.



RELAXING PILLOWFALL

For a deep level of relaxation, choose the Pillowfall upgrade. This gentle stream flows around your neck and shoulders easing away stress and tension.



MODERN LIGHTING

Upgrade to Elite lighting to enhance your hot tub with illuminated valve handles and exterior corners for a stunning, modern nighttime look.



WORRY-FREE RELAXATION

Extend your warranty by 2 additional years on key components, ensuring your hot tub experience remains worry-free. Relax and enjoy, knowing you're covered for years to come.



ADVANCED SPA MAINTENANCE

FROG® @ease®

The Mineral Sanitizer



The built-in hot tub sanitizer with minerals and up to 75% less chlorine.

DIAMOND AOP™

UV-C Light & Ozone Sanitizer



An advanced sanitizer creating powerful hydroxyl radicals that rapidly eliminate bacteria, keeping your spa water crystal clear.

OZONATOR

Ozone Sanitizer



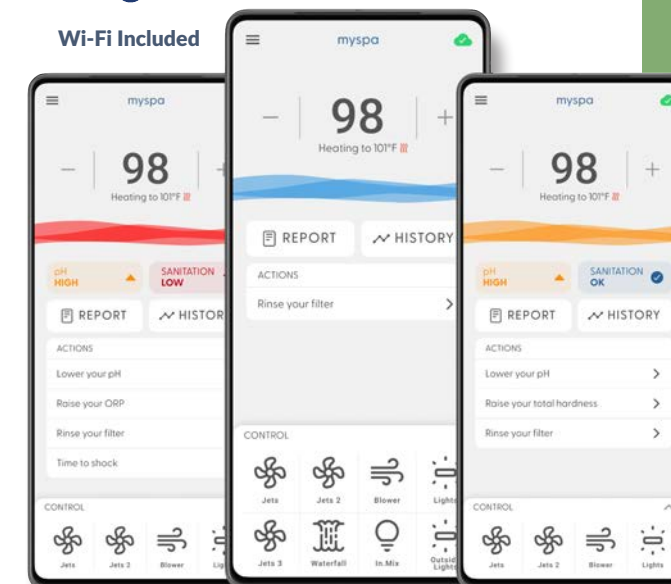
Ozonator naturally purifies water by eliminating bacteria, reducing chemical use for a cleaner, eco-friendly spa experience.

WATERLAB

Take the guesswork out of water maintenance.



Wi-Fi Included



PEACE OF MIND

Access to exact water measurement from anywhere without color interpretation.



SIMPLE TO USE

No test strips needed—get easy instructions to maintain crystal-clear water directly from the app.



ALL-IN-ONE MOBILE APP

Stay in control of your spa with the app—receive notifications and manage settings from anywhere.



SET AND FORGET SOLUTION

Hands-free and durable probe with 4 years of reliable performance.



ABSOLUTE HYDROTHERAPY

TARGETED THERAPY

Helix Jets



Helix jets create a spiraling water motion for a dynamic, pulsating massage. Their twisting design delivers heightened pressure, targeting muscles with precision.

SOOTHE YOUR SOLES

*Dedicated pump
& Dual Footblasters*



Melt away tension as dual multi-port Dual Footblaster jets powered by an additional dedicated pump deliver a powerful and precise massage to every sore spot in your feet.

EASE NECK TENSION

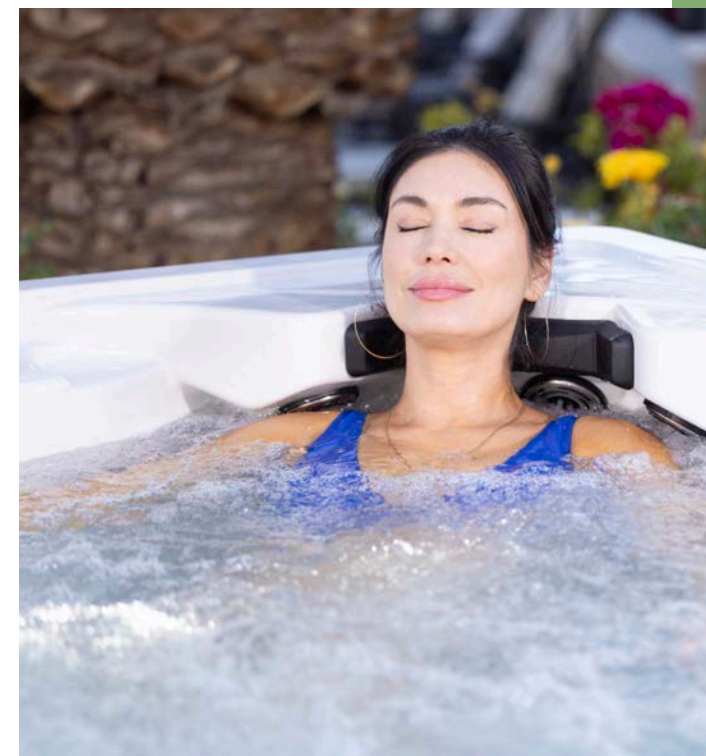
Neck Collar Jets



Multiport jets gently wrap around your neck and shoulders, delivering a soothing massage that relieves built-up tension. The focused water flow targets key pressure points, leaving you feeling relaxed and refreshed.

MORE THAN RELAXATION

The wellness benefits of hydrotherapy



RELAXATION

Sink into pure bliss as warm, bubbling water wraps around you, melting stress and leaving you utterly renewed.



RECOVERY

Delivering deep muscle relief to help you recharge and recover faster after every workout or long day.



CONNECTION

Turn moments into memories, bringing loved ones closer with the simple joy of soaking together.

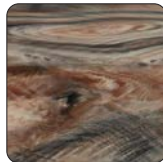


WELLNESS

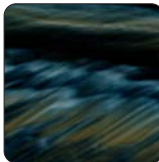
Support your well-being, promote better sleep, a lifted mood, and a healthier lifestyle through hydrotherapy.

ACRYLIC COLORS

ACRYLIC COLORS



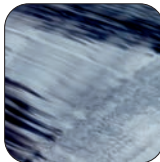
Tuscan Sun



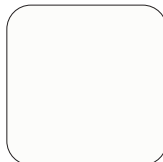
Midnight Canyon



Smoky Mountains



Storm Clouds



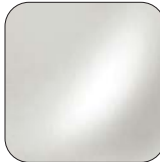
White



Silver Marble*



Glacier Mountain



White Pearl



CABINET & COVERS

CABINET COLORS



Grey



Black



Brown



Tapestry

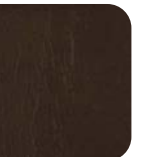
VINYL COVER



Stone



Black



Pinot

ALL SEASONS SHIELD COVER

Light-weight, durable material.



Midnight

PEACE OF MIND FOR A LIFETIME

All Artesian Spas models are designed, assembled and quality tested in Las Vegas, NV. Manufacturing in the USA ensures premium craftsmanship and local support.



LIFETIME WARRANTY ON STRUCTURE

Industry leading coverage.

- ✓ 5 YEARS ON SURFACE
- ✓ 3 YEARS ON PLUMBING, ELECTRICAL AND LABOR
- ✓ 2 YEARS ON CABINET



LIFETIME STRUCTURE & ENHANCED WARRANTY ON ELITE

Ideal for customers who want extra coverage. Standard on Elite models or add the option on Essential & Luxury.

- ✓ 7 YEARS ON SURFACE
- ✓ 5 YEARS ON PLUMBING, ELECTRICAL AND LABOR
- ✓ 2 YEARS ON CABINET



FEATURES
BY SERIES

S=Standard | O=Optional

	ISLAND ELITE					
	BIMINI	ISLA MARGARITA	BAHAMA	CAYMAN	ANTIGUA	CAPTIVA
SPECS						
Seating	9	9	6	7	6	7
Length (inches)	91	91	91	91	84	84
Width (inches)	132	108	91	91	84	84
Depth (inches)	36	36	36	36	36	36
Dry Weight (lbs)	1225	1073	985	1040	860	875
Operating Capacity (gal)	683	531	447	435	355	375
JETS & PUMPS						
Total Jets	72	68	64	64	54	54
Dual Footblasters	S	S	S	S	S	S
Foot Jets						
Circulation Pump	1	1	1	1	1	1
Jet Pumps	4	4	4	4	3	3
CLEAN WATER SYSTEMS						
WaterLab	O	O	O	O	O	O
Diamond AOP™	O	O	O	O	O	O
FROG @ease™ with Smartchlor™	O	O	O	O	O	O
Ozonator	S	S	S	S	S	S
HEATER						
North America 60Hz	5.5kW	5.5kW	5.5kW	5.5kW	5.5kW	5.5kW
Export 50 Hz	3.0kW	3.0kW	3.0kW	3.0kW	3.0kW	3.0kW
INSULATION						
Full Foam	S	S	S	S	S	S
WATER FEATURES						
CascadeFalls	S	S	S	S	S	S
PillowFall	O	O	O	O	O	O
LIGHTING						
Interior Underwater Lighting	S	S	S	S	S	S
Illuminated Pillows	S	S	S	S	S	S
Illuminated Footblasters	S	S	S	S	S	S
Illuminated Cascade Falls	S	S	S	S	S	S
Illuminated Controls	S	S	S	S	S	S
Vertical Corner Cabinet LED	S	S	S	S	S	S
AUDIO / WIFI OPTION						
Bluetooth Audio	O	O	O	O	O	O
WiFi Module	O	O	O	O	O	O
FRAME						
Hybrid Frame	S	S	S	S	S	S
WARRANTY						
Structure	LIFE	LIFE	LIFE	LIFE	LIFE	LIFE
Surface	7	7	7	7	7	7
Parts, Labor, Plumbing, Electrical	5	5	5	5	5	5
Cabinets	2	2	2	2	2	2
Extended Warranty	S	S	S	S	S	S

ISLAND LUXURY						
BIMINI	ISLA MARGARITA	BAHAMA	CAYMAN	ANTIGUA	CAPTIVA	NEVIS
9	9	6	7	6	7	6
91	91	91	91	84	84	84
132	108	91	91	84	84	78
36	36	36	36	36	36	34
1225	1073	935	990	810	825	864
683	531	445	435	355	375	318
60	56	52	52	44	44	44
S	S	S	S	S	S	S
1	1	1	1	1	1	1
3	3	3	3	3	3	3
O	O	O	O	O	O	O
O	O	O	O	O	O	O
O	O	O	O	O	O	O
S	S	S	S	S	S	S
5.5kW	5.5kW	5.5kW	5.5kW	5.5kW	5.5kW	5.5kW
3.0kW	3.0kW	3.0kW	3.0kW	3.0kW	3.0kW	3.0kW
S	S	S	S	S	S	S
S	S	S	S	S	S	S
O	O	O	O	O	O	O
O	O	O	O	O	O	O
S	S	S	S	S	S	S
S	S	S	S	S	S	S
S	S	S	S	S	S	S
S	S	S	S	S	S	S
O	O	O	O	O	O	O
O	O	O	O	O	O	O
O	O	O	O	O	O	O
O	O	O	O	O	O	O
S	S	S	S	S	S	S
LIFE	LIFE	LIFE	LIFE	LIFE	LIFE	LIFE
5	5	5	5	5	5	5
3	3	3	3	3	3	3
2	2	2	2	2	2	2
O	O	O	O	O	O	O

ISLAND ESSENTIAL					
BAHAMA	CAYMAN	ANTIGUA	CAPTIVA	NEVIS	SANTA CRUZ
6	7	6	7	6	3
91	91	84	84	84	84
91	91	84	84	78	61
36	36	36	36	34	34
885	940	760	775	864	607
445	435	355	375	318	232
44	44	32	32	33	32
S	S	S	S	S	S
1	1	1	1	1	1
2	2	2	2	2	2
O	O	O	O	O	O
O	O	O	O	O	O
O	O	O	O	O	O
O	O	O	O	O	O
5.5kW	5.5kW	5.5kW	5.5kW	5.5kW	5.5kW
3.0kW	3.0kW	3.0kW	3.0kW	3.0kW	3.0kW
S	S	S	S	S	S
S	S	S	S	S	S
O	O	O	O	O	O
O	O	O	O	O	O
O	O	O	O	O	O
O	O	O	O	O	O
S	S	S	S	S	S
LIFE	LIFE	LIFE	LIFE	LIFE	LIFE
5	5	5	5	5	5
3	3	3	3	3	3
2	2	2	2	2	2
O	O	O	O	O	O



ArtesianSpas.com



ARTESIAN SPAS™